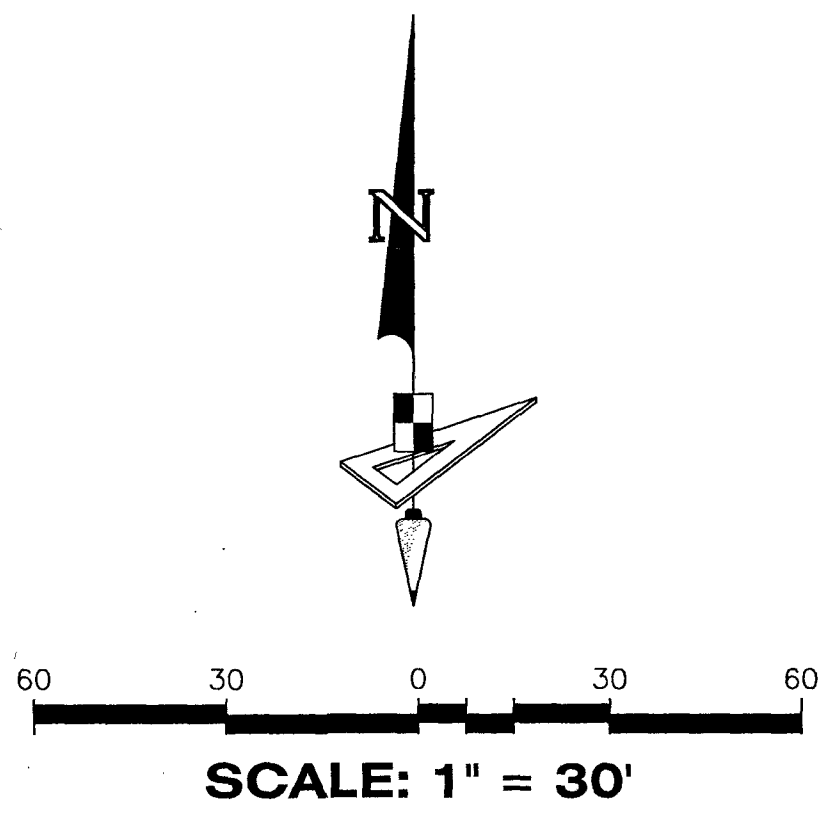


# APEC - CONGRESS

BEING A REPLAT OF LOTS 1,2,3,4,5 AND A PORTION OF LOT 6, BLOCK 1, PALM ACRE ESTATES, ACCORDING TO THE PLAT THEREOF, AS RECORDED IN PLAT BOOK 20, PAGE 5, OF THE PUBLIC RECORDS OF PALM BEACH COUNTY, FLORIDA, TOGETHER WITH A PORTION OF SECTION 5, TOWNSHIP 44 SOUTH, RANGE 43 EAST, PALM BEACH COUNTY, FLORIDA

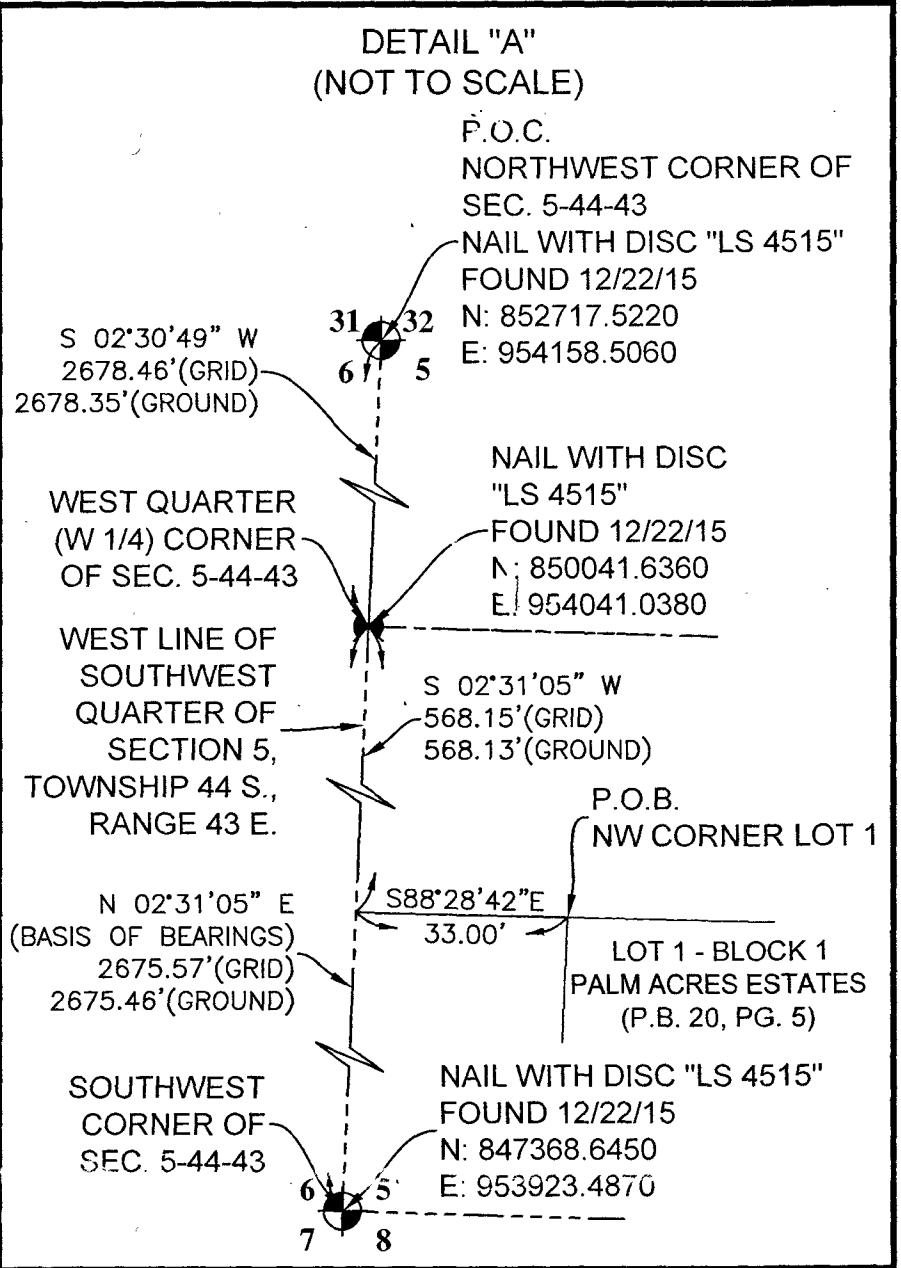
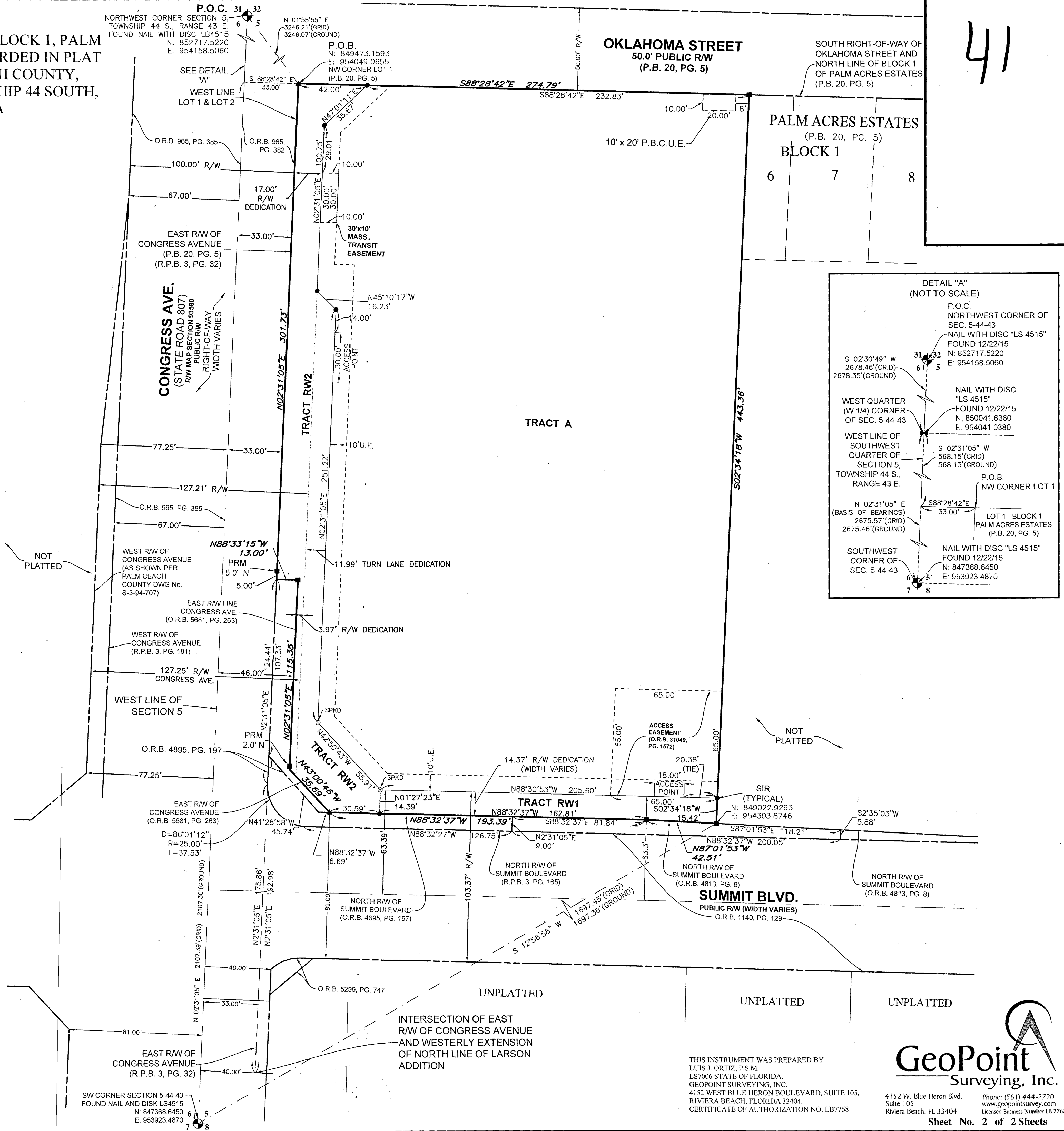
41



STATE PLANE COORDINATE NOTES:  
a. ALL DISTANCES ARE GROUND UNLESS OTHERWISE NOTED  
b. SCALE FACTOR=1.0000429  
c. COORDINATE SYSTEM = 1983 STATE PLANE TRANSVERSE MERCATOR PROJECTION  
COORDINATES SHOWN ARE GRID COORDINATES  
d. ZONE = FLORIDA EAST ZONE  
e. DATUM = NAD 83-1990 ADJUSTMENT  
f. GROUND DISTANCE X SCALE FACTOR = GRID DISTANCE  
g. LINEAR UNIT = U.S. SURVEY FEET  
h. ALL BEARINGS ARE GRID

### LEGEND

- P.O.C. ----- POINT OF COMMENCEMENT
- P.O.B. ----- POINT OF BEGINNING
- P.B. ----- PLAT BOOK
- P.B.C. ----- PALM BEACH COUNTY
- NAD ----- NORTH AMERICAN DATUM
- D.B. ----- DEED BOOK
- O.R./O.R.B. ----- OFFICIAL RECORDS BOOK
- PG./PG(S) ----- PAGE(S)
- W.M.T. ----- WATER MANAGEMENT TRACT
- R.P.B. ----- ROAD PLAT BOOK
- P.B.C.U.E. ----- PALM BEACH COUNTY UTILITY EASEMENT
- U.E. ----- UTILITY EASEMENT
- SIR ----- SET IRON ROD
- R ----- RADIUS
- L ----- ARC LENGTH
- D ----- DELTA ANGLE
- SEC. ----- SECTION
- 5-44-43 ----- SECTION-TOWNSHIP-RANGE
- R/W ----- RIGHT-OF-WAY
- /PRM ----- SET PERMANENT REFERENCE MONUMENT, A 1 1/2" BRASS DISK STAMPED "PRM LB7768" IN A 4"x4" CONCRETE MONUMENT
- ▲/PRM ----- SET PERMANENT REFERENCE MONUMENT, A NAIL & DISK STAMPED "PRM LB7768"
- ----- INDICATES (SIR) SET IRON ROD LB7768
- ----- INDICATES (SPKD) SET NAIL & DISK LB7768
- ⊕ ----- SECTION CORNER LOCATION
- ⊗ ----- QUARTER SECTION LOCATION



THIS INSTRUMENT WAS PREPARED BY  
LUIS J. ORTIZ, P.S.M.  
LS7006 STATE OF FLORIDA  
GEOPOINT SURVEYING, INC.  
4152 WEST BLUE HERON BOULEVARD, SUITE 105,  
RIVIERA BEACH, FLORIDA 33404.  
CERTIFICATE OF AUTHORIZATION NO. LB7768

